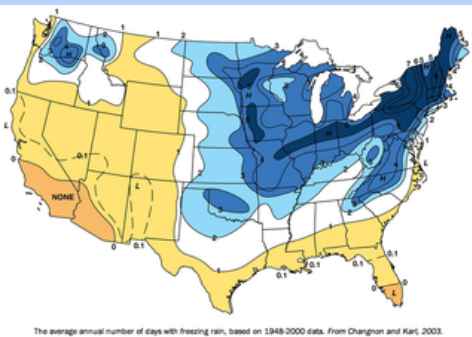
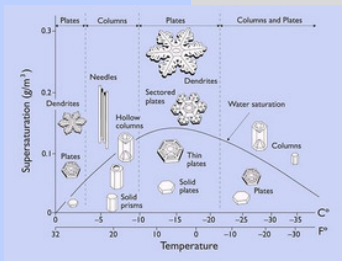


# WHAT IS A BLIZZARD?

## WHAT IS A BLIZZARD?

### HOW DO BLIZZARDS FORM?

Blizzards are formed by cold air mixed with warm air that makes a very tense storm.

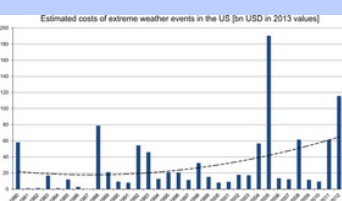


### WHEN & WHERE DOES THIS WEATHER EVENT FREQUENTLY

In the U.S blizzards frequently happens in upper Midwest. But blizzards happens all over the world mostly cold climate. (Chicago, New York, Indiana, and etc.)

.You should go check out this websites about blizzards  
<https://scied.ucar.edu/shortcontent/blizzards>

# What is a Blizzard pt.2?



## Is there a scale used to measure the intensity of your weather event?

A Blizzard is one type of storm that have no scale in which is to measure the intensity of a Blizzards strength is measured by the amount of snow fall.

## How is a Blizzard event named or classified?



A Blizzard lasts for 3 hours long and sustains wind or frequent gust goes to 35 mph, and considerable falling of snow.

## What technology is used to monitor a Blizzard event?

Improved weather prediction, therefore, will be vital to giving communities more time to prepare for dangerous storms, saving lives and minimizing damage to infrastructure.

## What are some famous examples of Blizzard severe weather hazard?

blinding: If you're driving in a blizzard, the snow could blind your vision

Fast wind: Don't walk in a blizzard, because you could get blowed back (Of Couse unless your strong enough then whatever)

Tornado: The Blizzard could turn into a Tornado!



# What is a Blizzard pt.3?

**How does one prepare for your  
weather hazard?**

Just don't go outside until the blizzard is over with  
completely.



**What should someone do if they  
are caught in the storm?**

Stay home, or if your not close to  
your house go to a near by building

**What effects should someone  
expect from this type of storm?**

You can get hypothermia, get your car stuck in the middle  
no where, Frost bite, and etc.

**What type of clean-up or  
recovery should be expected  
after your severe weather  
event?**

Hospital: Go check out if you got hypothermia or  
frost bite or whatever sickness you have.

Call 911: If you get stranded in the middle of no  
where you should call this number...



# CITATIONS

Blizzards: The fiercest of winters fury defined. (n.d.).

Retrieved March 05, 2018,  
from

<https://www.accuweather.com/en/weather-news/what-is-a-blizzard/70003731>

Staff, L. S. (2012, October 18). What Is a Blizzard?

Retrieved March 05, 2018,  
from

<https://www.livescience.com/32210-what-is-a-blizzard.html>